

spring/summer '25

Ahlvar Gallery



Yui top /lavender/ **Hana long logo skirt** /lavender/



Tori tee /lavender/ **Hana long logo skirt** /lavender/



Lacy tank / blue grey / **Hana long skirt** / blue grey /



Lima tank / sky blue / **Hana satin skirt** / sky blue /



Kori over shirt /light military/**Hana short skirt**/cream/



Kaia over shirt /dark grey/**Saya skirt** /light military/



Mia dress / blue grey/



Mina shirt / dark berry/ **Mina trousers** / dark berry/



Nelly dress /black/



Kiko jacket /deep forest/**Nelly dress** /black/



Lana tank /cream/**Tilda skirt** /cream/



Nyx jacket /light military/**Hana long skirt** /black/



Gigi oxford shirt /cream/**Hana long skirt** /black/



Gigi oxford shirt /cream/**Hana long skirt** /black/



Lacy tank / dark berry / **Hida frill skirt** / dark berry /



Milly top / dark berry / **Hida frill skirt** / dark berry /



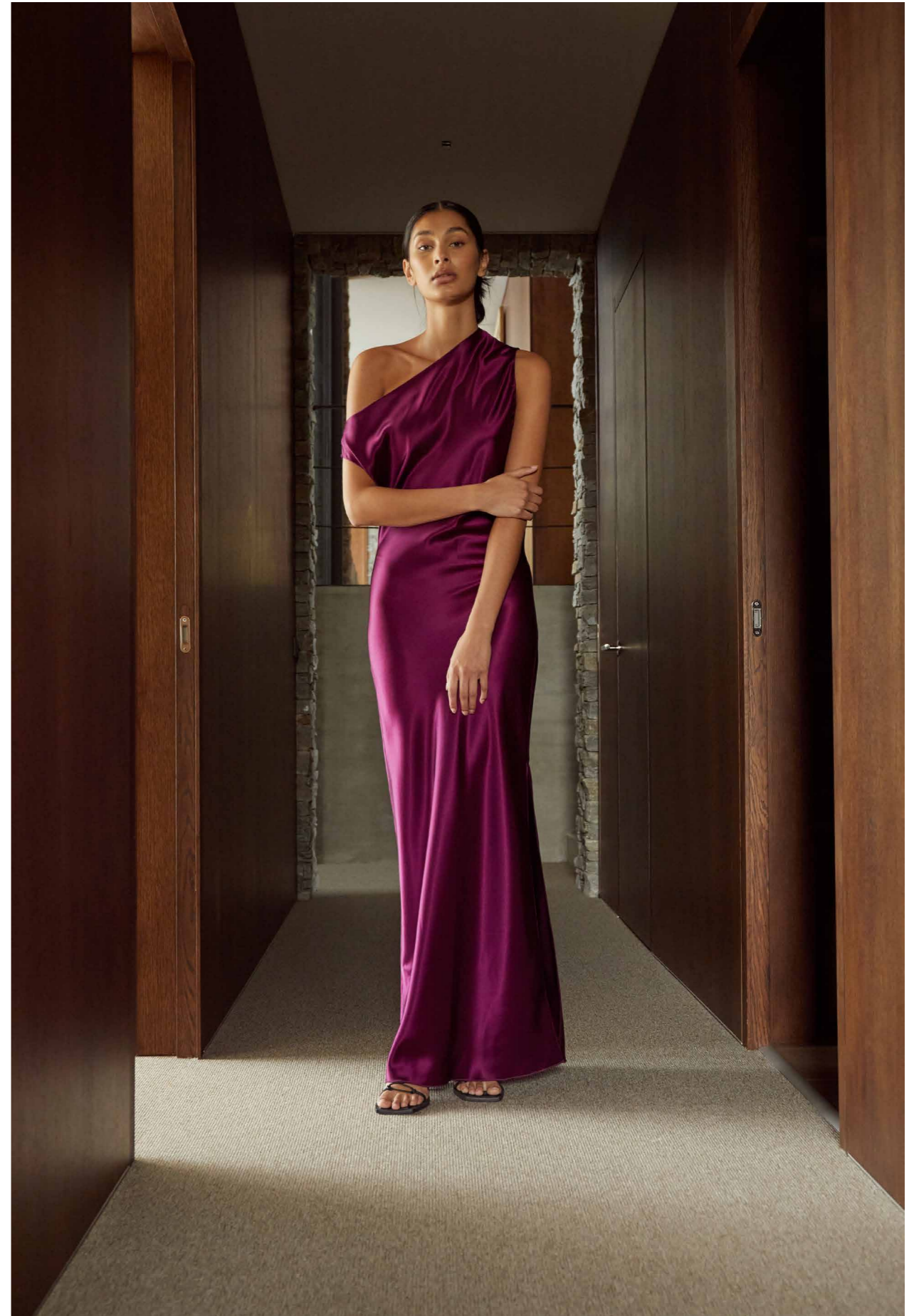
Dani blouse /cream/ **Mila trousers** /cream/



Lila tunic /cream/



Iris dress / light yellow /



Lacy dress / dark berry /



Elle tank / cream / **Mana skirt** / cream /



Haley dress / blue grey /



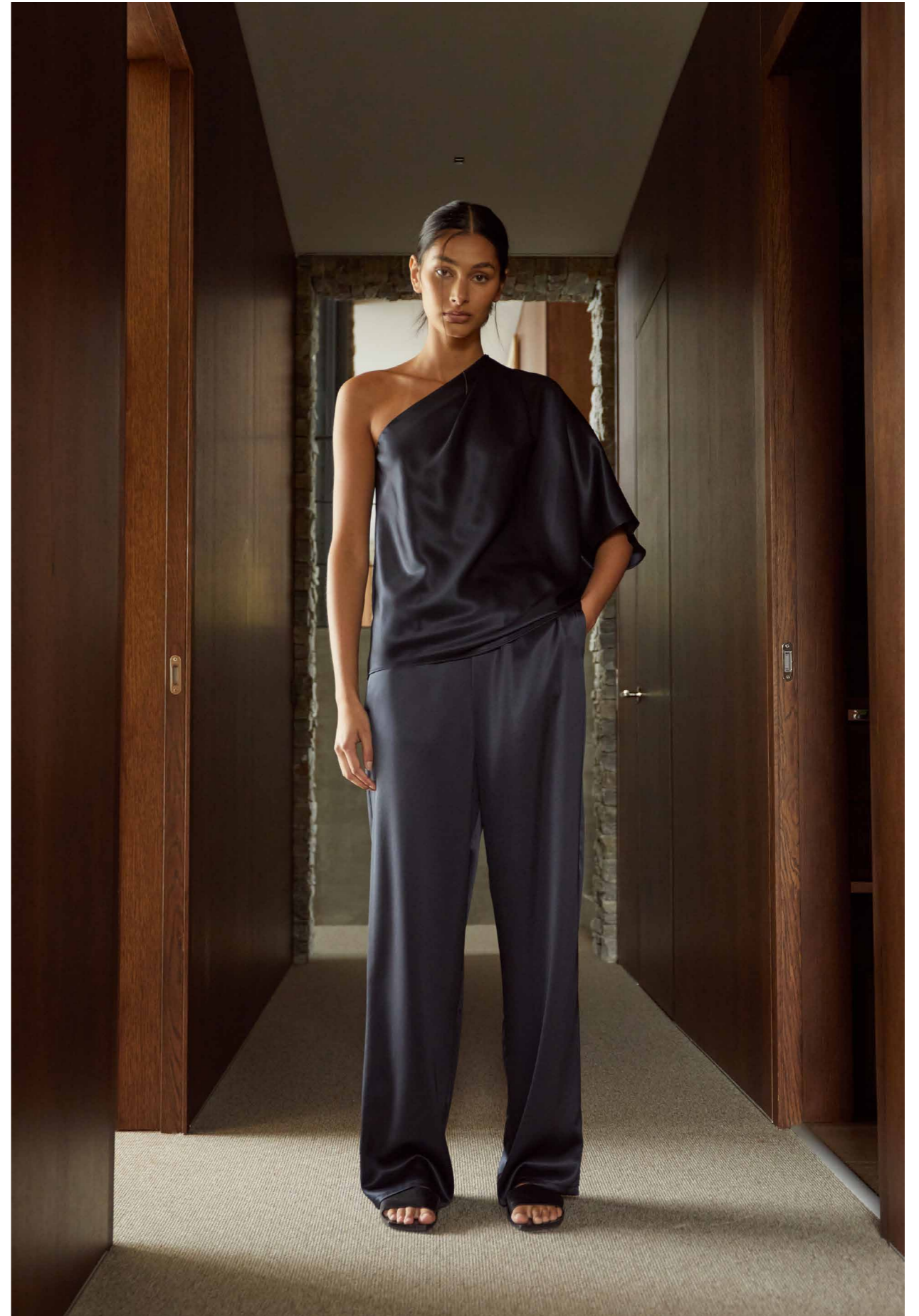
Nina v-neck cotton blouse /white/**Sam skirt** /lavender/



Yui silk top /white/**Sam skirt** /lavender/



Ella dress /midnight blue/



Ella blouse /blue grey/**Ayla satin trousers** /blue grey/



Elle linen tank /cream /Miley linen trousers /cream/



Nina v-neck linen blouse /cream /Miley linen trousers /cream/



Soma linen dress / cream /



Nina v-neck linen blouse / blue grey / **Miley linen trousers** / blue grey /



Milly silk top /white/**Hana satin skirt** /midnight blue/



Lima satin top /midnight blue/**Hana satin skirt** /midnight blue/



Alila blouse /light military/**Miley trousers** /black/



Zia top /cream/**Miley trousers** /black/



Nala blouse /cream/**Miley trousers** /black/



Milly sequin top /steel blue/**Ayla sequin trousers** /steel blue/



Nina sequin blouse /cream / **Tilda sequin skirt** /cream



Lima sequin tank /cream/ **Ayla sequin trousers** /cream/

A woman with dark hair pulled back, wearing a black off-the-shoulder top, is leaning on a light-colored table. She is looking directly at the camera with a neutral expression. The background consists of vertical wood paneling. The text "AHLVAR GALLERY CLASSICS" is overlaid in white, bold, sans-serif font on the left side of the image.

AHLVAR GALLERY CLASSICS



Shin tank /cream/



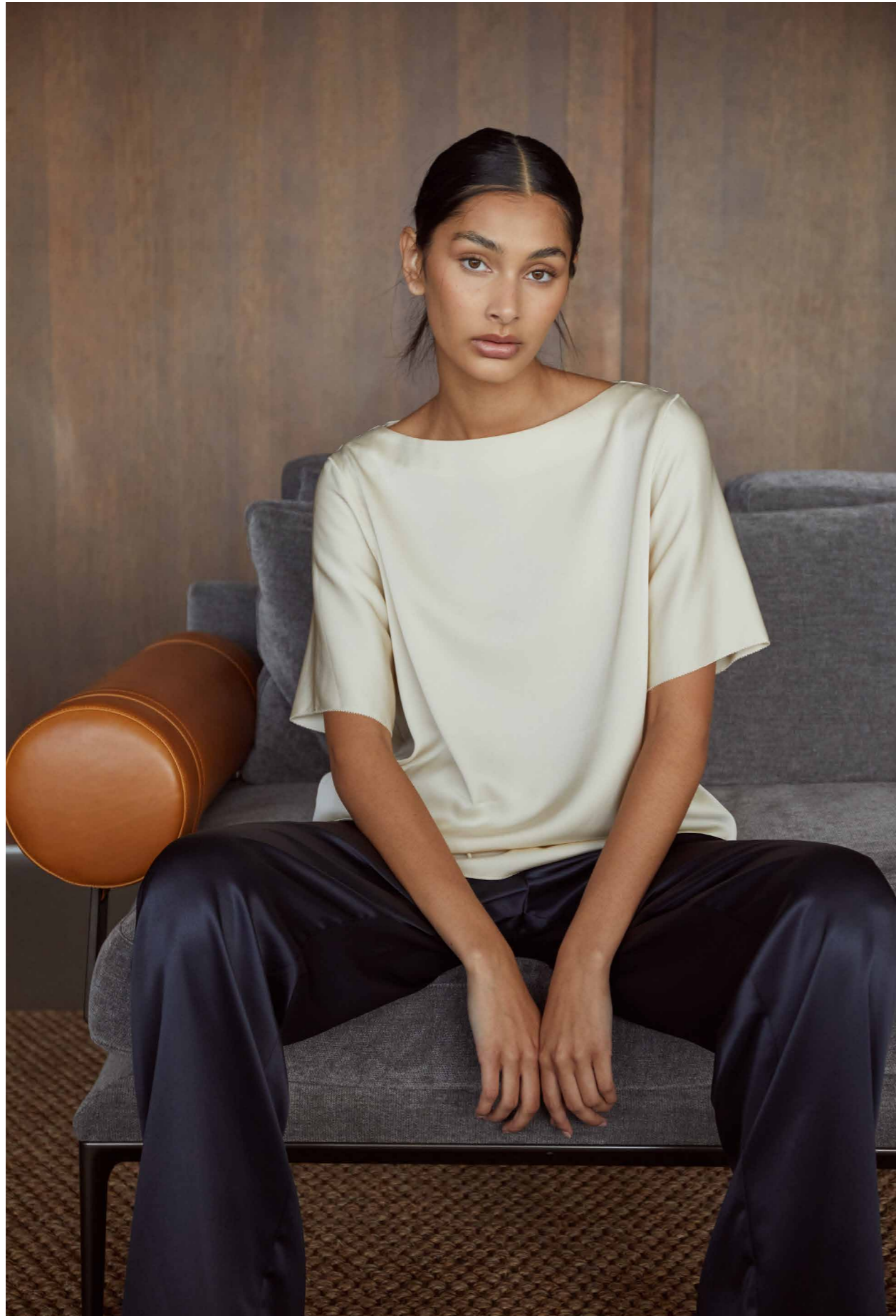
Lima tank /cream/



Lima top /cream/



Lima tee /cream/



Yoli blouse /cream/



Kelly blouse /cream/



Yoli v-neck blouse /cream/



Kelly v-neck blouse /cream/



Thess silk tee /cream/



Ayumi blouse /cream/



Chima blouse /black/Hana long skirt /black/



Chiney blouse /black/Hana long skirt /black/



Okaya tee /white/**Hana long skirt** /black/



Thelma LS tee /white/**Hana long skirt** /black/



Okaya tee /white/ Ava trousers /black/



Okaya tee /white/ Tilda skirt /black/



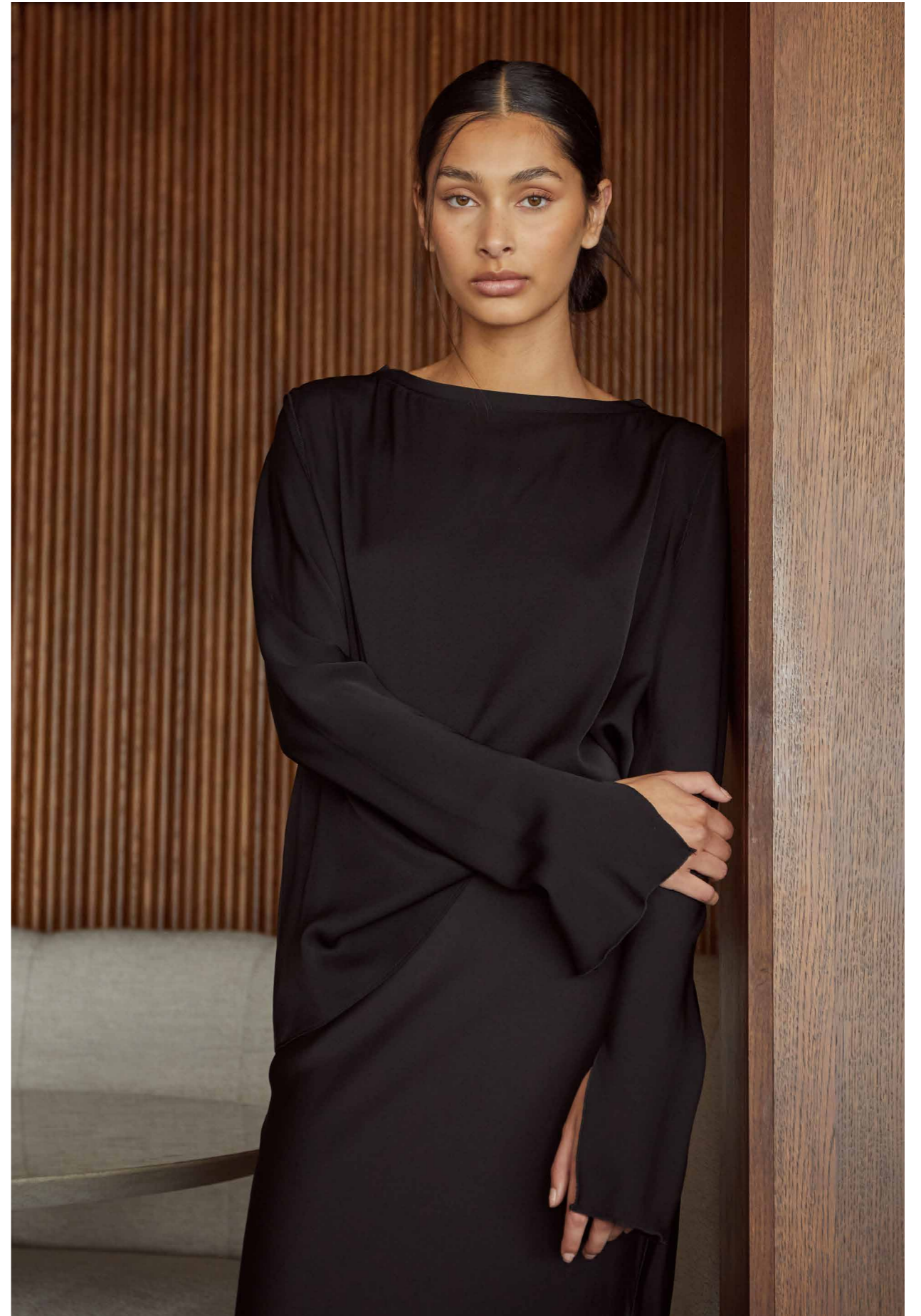
Okaya tee /white/ Hana satin skirt /black/



Okaya tee /white/ Hana long skirt /black/



Lola cropped tee /white/



Lola blouse /black/



Mia shirt /off-white/

Sweden: Meitalle Cohen, +46 704 323525, meitalle@ahlvar.com

Belux: Pas de Deux, Michèle Albers, +32 93280540, info@pasededoux.be

Denmark: Personal Style, Inger Halm, +45 40152501, inger.halm@personalstyle.dk

France: Ag-ency, Adrien Gossiôme, +33 682387566, adrien@ag-fashionagency.com

Germany: Hey de Kamp Fashion, Hey Won Weidekamp/Miriam Hoffmann, +49 15164411322,
hyewon@heydekamp-fashion.de, miriam@heydekamp-fashion.de

Holland: Mezza 9, Esther Schiffer, +31 629397050, esther.schiffer@mezza9.nl

Norway: Skar Agency, Cathrine Skar, +47 47 97 87 10, cathrine@skaragency.no

Italy: Elisa Gaito, Elisa Gaito, +39 3479980775, elisa@elisagaito.com

Switzerland: Löw Fashion Agency, Esther Löw, +41 793549219, esther@estherloew.com